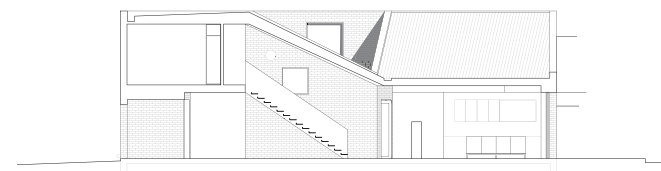




← The playroom is suspended over the dining room and kitchen, providing an independent children's area within the main living space.

→ The roof is deformed at the northeast corner, allowing sunlight to penetrate deep into the courtyard and the house.

Long Section

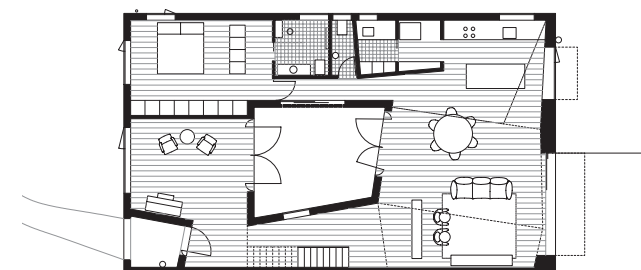


+ 1



0

z



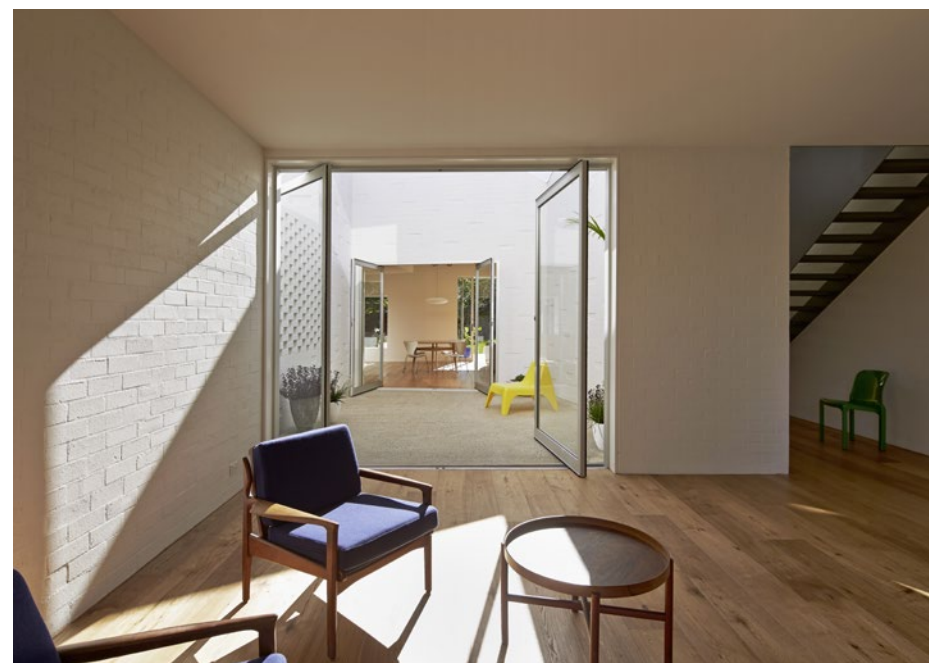
Text **Elana Castle**
Photos **Peter Bennetts**

Riverview House, designed by Sydney-based Bennett and Trimble, stands in stark contrast to the post-war brick bungalows nearby. But it's not the material palette that sets the house apart. In many respects, the extensive use of regular brickwork places Riverview House comfortably in context. Rather, it's the architects' creative manipulation of the building's simply formed envelope that lifts it well above the ordinary.

'Despite a restrictive budget, we invented an economical language of folded and angled forms – both internally and externally – to create interest, detail and shadows,' says Matthew Bennett. While the majority of the internal walls are angled – setting up a dynamic among the living area, courtyard and four bedrooms – it's the children's playroom on the upper level that underscores the overall strategy. 'The playroom area has been folded back from the external wall, allowing for a strong visual connection to the living room below and a non-clichéd blurring between inside and outside,' he continues. 'The angled lines also set up a spring point for the angled roofscape above, which has been deformed at the northeast corner, maximizing daylight penetration and providing all areas of the house with cross ventilation.' The folded motif is beautifully echoed by an elegant steel staircase and plate-steel awnings, which offset the warm timber floors throughout.

Bennett and Trimble also devised an ingeniously detailed low-cost treatment for the building's internal and external façades. 'We used a mallet to create an organic pattern of indented brickwork,' says codirector Marcus Trimble. The unconventional but exceptionally effective technique provides textural interest and generates a constantly changing play of light and shadow during the day.

bennettandtrimble.com



Bennett and Trimble plays upstairs